

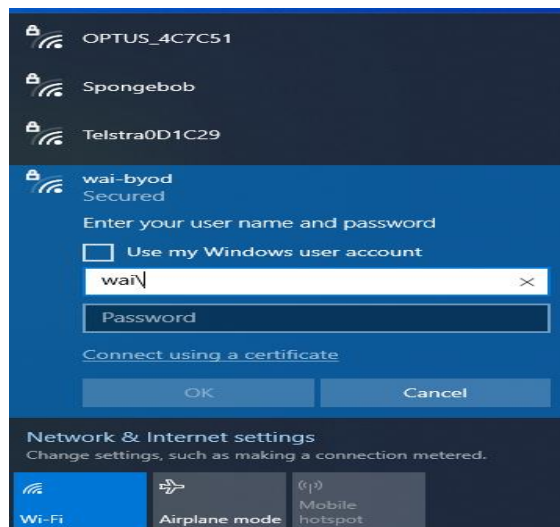
CONNECTING TO WAI-BYOD

The below example illustrates how to connect to the wifi on a Windows 10/11 laptop.

1. Click on the wifi icon on the bottom right corner of your laptop.
2. Then click on **wai-byod**.
3. For Students: Type in **myangliss\student number** in the username field (e.g. myangliss\20000000) and your network password in the password field.

For Staff: Type in **wai\your username** in the username field (e.g. wai\johnd) and your usual William Angliss password

4. Lastly, click **OK**. You should now be connected to our wireless network.

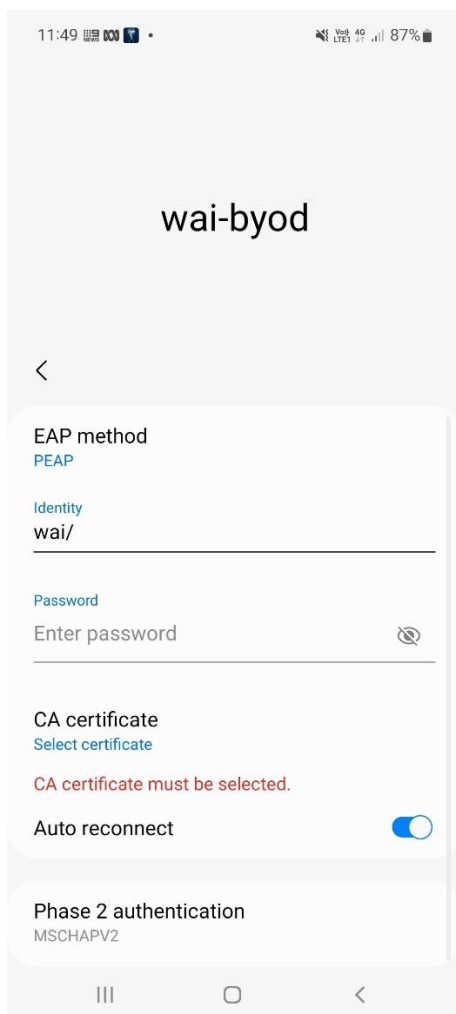


The below example illustrates how to connect to the wai-byod wifi on an Android device.

1. Tap on the wifi connection on your phone.
2. Tap on **wai-byod** and click on **Connect**.
3. Under EAP method, please ensure **PEAP** is selected.
4. For Students: Type in **myangliss\student number** in the identity field (e.g. myangliss\20000000) and your network password in the password field.

For Staff: Type in **wai\your username** in the identity field (e.g. wai\johnd) and your usual William Angliss password.

5. Tap on **Select certificate** under **CA certificate** and click on **Don't Validate**.
6. Lastly, click on the **Connect** button. You should now be connected to our wireless network.

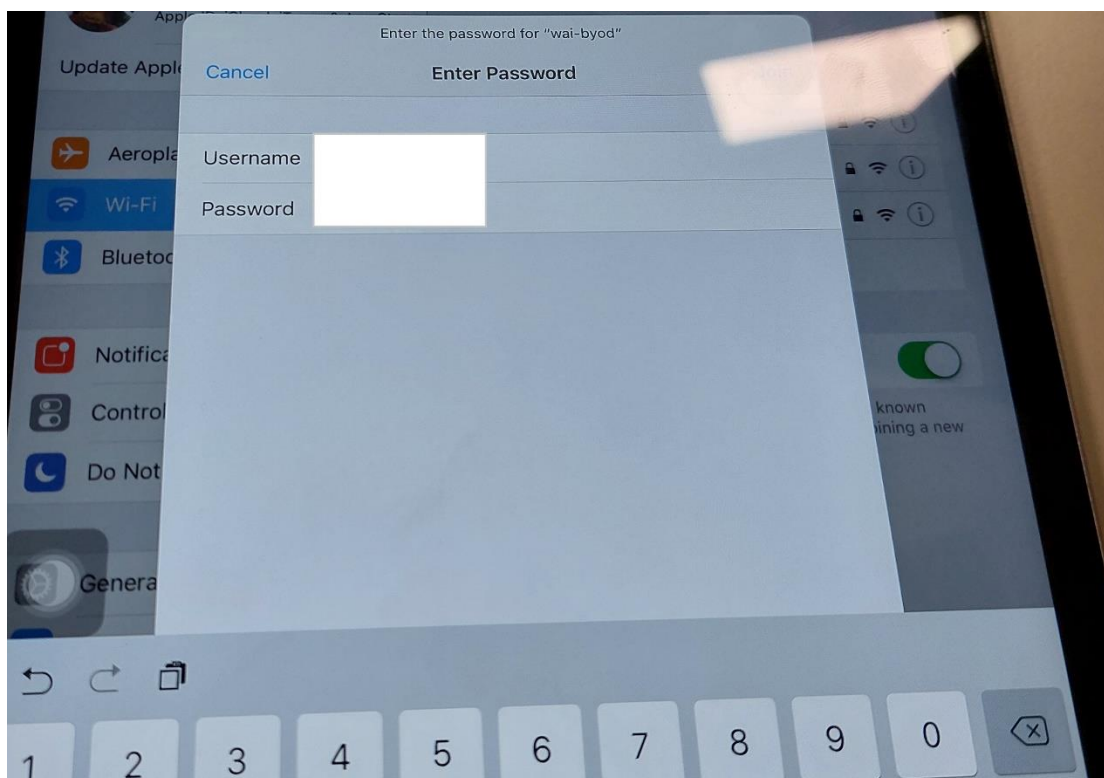


The below example illustrates how to connect to the wai-byod wifi on an Apple device.

1. Select **Settings** on your device.
2. Tap on **Wi-fi Connections**.
3. Tap on **wai-byod** and click on **Connect**.
4. For Students: Type in **myangliss\student number** in the username field (e.g. myangliss\20000000) and your network password in the password field.

For Staff: Type in **wai\your username** in the username field (e.g. wai\johnd) and your usual William Angliss password.

5. Click on **Join** and then click **Trust** on the next prompt. This will then enable you to use the wai-byod wifi.



Please note: Wifi connection can be dependent on individual device settings. Not all devices are supported, such as Chromebooks.

Dedicated technical support is not provided for BYOD. Support offered by Library staff and IT staff is best effort only.